

PROFILE OF THE NANTON DISTRICT

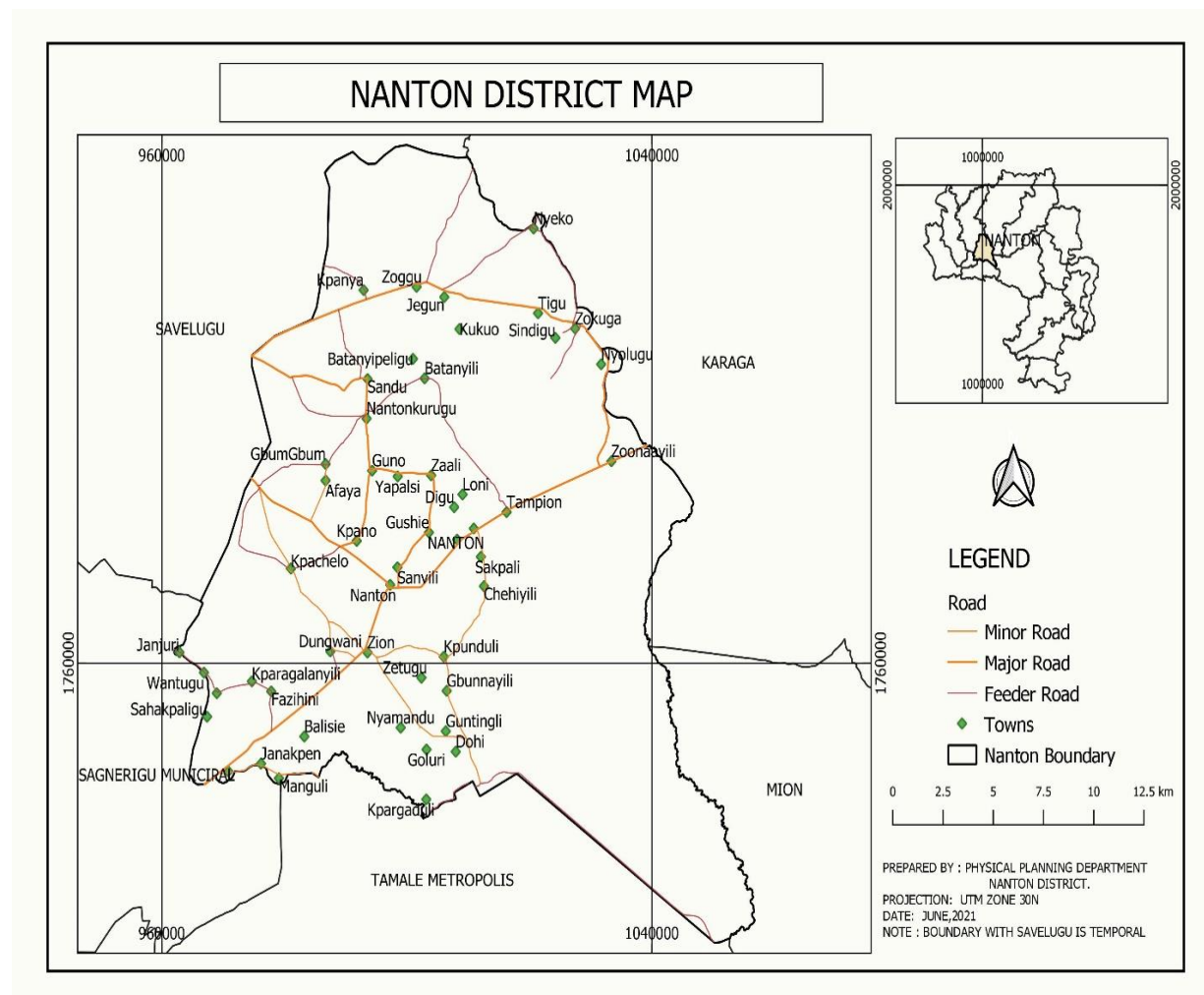
1.0 Introduction

The Nanton District was carved out of the then Savelugu-Nanton Municipal by legislative instrument 2343 of 2017 and was inaugurated on the 15th of March, 2018. The projected population in 2024 is 56,697, Males been 28,011 (49.8%) and females been 28,686 (50.2%).

1.1 Location and Size

The District is approximately located in the central part of the northern region of Ghana. It shares boundaries with Savelugu Municipality to the west, Sagnarigu Municipal to the south-west, and Tamale Metropolis to the south. To the east, Nanton District shares a boundary with the Karaga District while the Mion District is located at the south Eastern part of the District.

Fig 1.1: Settlement Map of the Nanton District



1.3 Climate and Vegetation

The district receives an average annual rainfall of 600mm which is considered enough for a single farming season. The annual rainfall pattern is erratic at the beginning of the raining season, starting in April and intensifying as the season advances, raising the average from 600mm to 1000mm sometimes.

The District is characterized by high temperatures with an average of 34^oC. The minimum temperature could be as low as 16^oC, and this could rise to as high as 42^oC maximum. The low temperatures are experienced from December to late February, during which the North-East Trade winds (harmattan) greatly influence the District.

The Nanton district is located in the Savanna woodland, which could sustain large-scale livestock farming, as well as the cultivation of food crops such as rice, groundnuts, yams, cassava, maize, cowpea and sorghum.

The trees found in the area are semi-deciduous, hence drought resistant and hardly shed their leaves completely during the long dry season. Most of these are of economic value and serve as important means of livelihood, especially for women. Notable among these are shea trees (the nuts which are used for making sheabutter) and dawadawa that provides seeds used for condimental purposes.

Over the decade there has been dramatic changes in the climatic conditions in terms of climate variability and change due to the general global warming as observed the world over. The situation has resulted into some climate change stressors in the district and if unchecked, will lead to more devastating stressors going into the future. Tables 1, 2 and 3 present analysis of the climate change and its effects in the district.

Analysis of climate change and its effects

Table 1: Current Conditions (the climate stressors the district currently experienced)

Rainfall:	Wind:	Temperature:	Flooding:
<ul style="list-style-type: none"> ☐ Extreme rainfall events ☐ Drought ☐ Seasonal variability 	<ul style="list-style-type: none"> ☐ Severe wind/tropical storms 	<ul style="list-style-type: none"> ☐ Prolonged heat waves ☐ Extreme hot days 	<ul style="list-style-type: none"> ☐ Flash/surface flooding

Table 2: Potential Future Conditions (climate change stressors)

Rainfall:	Wind:	Temperature	Flooding:
<ul style="list-style-type: none"> ☐ Increased frequency and intensity of extreme rainfall events ☐ Increased frequency and intensity of drought ☐ Less annual rainfall ☐ Higher seasonal variability 	<ul style="list-style-type: none"> ☐ More severe wind/storms 	<ul style="list-style-type: none"> ☐ Increased number and intensity of heat waves 	<ul style="list-style-type: none"> ☐ Increased frequency and intensity of flash/ surface flooding.

Table 3: Current and Potential Future Climate Risks

Productivity	Food Security
<ul style="list-style-type: none"> ☐ Damage to crops and reduced productivity due to heat stress (e.g. cassava, cocoa, maize). ☐ Reduced animal feeding and decreased growth rates due to higher temperatures. ☐ Increased prevalence of parasites and diseases that affect crops and livestock due to changing climate conditions. ☐ Decreased agricultural productivity, food security, and nutrition caused by changes in rainfall. ☐ Reduced water availability for crops and livestock due to increased evaporative demand from higher temperatures. 	<ul style="list-style-type: none"> ☐ Reduced yields of staple cereal crops and increased food insecurity due to higher temperatures. ☐ Reduced food availability due to the impact on supply changes and productivity of increased climate variability and the changed frequency and intensity of extreme weather events. ☐ Price volatility and price spikes due to increasing climate variability and extremes that impact local and global food production. ☐ Reduced willingness of farmers to invest in productivity-enhancing assets (e.g. fertilizer) due to price volatility and greater future price uncertainty. ☐ Disproportionately negative effects on poor consumers, who spend most of their income on food.

1.4 Condition of the natural environment

The characteristic savannah vegetation of the district consisting of short trees and grasses constitute the critical element of the natural environment. Over the years, over reliance on fuel wood for cooking and Shea Butter processing, annual bush fires, construction and inappropriate farming practices constitute the major activities which degrade the environment. The activities of a large number of contractors who engage in sand wining also cause considerable degradation to the district's environment.

1.5 The build environment

With regards to the built environment, there is a complete absence of development control in the district, especially in the major communities such as, Nanton (the district capital), Tampion among others, which has led to disorganized physical development in the district. The absence of planning schemes in the district has resulted to poor settlement planning.

Poor sanitation and personal hygiene practices such as indiscriminate solid and liquid waste disposal especially open defecation are major factors that impact negatively on the environment. Conscious of the consequences of poor sanitation on the people, the District Assembly with support from some Development Partners have worked on sensitizing, triggering and monitoring of 45 communities in the district on the concept of community led total sanitation (CLTS). Out these communities 23 are ODF. There is therefore the need to continue with the CLTS activities on the construction and use of household latrines in the communities, while institutional latrines are provided in all public places to ensure open defecation free district by the end of the plan period.

1.6 Geology and Soil

The Nanton District has an extensive sedimentary rock formation. The major soil type in the District is sandy loam, with mostly flat lands and some valley lands suitable for rice farming.

The sandy loamy soils are fertile and suitable for the cultivation of cereals and leguminous crops such as maize, sorghum, cowpea and groundnuts on a large scale. The presence of gravel and clay deposits in the District presents an opportunity for the construction of bricks and tiles, paint and pottery industries.

1.7 Topography and Drainage

Generally, the landscape of the District is flat and low-lying, with an average height of 300 meters above sea level. Drainage is quite poor as there are no major rivers, except a few Dams. In the dry season, all the water sources dry up, leaving the District with no surface water. The District rely on valley areas for the creation of dams and dug-outs for small scale irrigation, fishing and watering of animals, particularly in the long dry season.

1.8 Natural and Manmade Disasters

Disasters in general are threats to human survival. The two categories of disasters experienced in the district include natural and manmade disasters. The natural disasters include floods, drought, storms, and diseases such as meningitis (CSM). This situation deepens poverty and increases vulnerability among the people. Disasters such as domestic and bush fires, vehicular and motor accidents are mostly caused by human behavior with serious devastations and consequences. Motor accidents in particular are rampant in the district resulting to lose precious lives, mostly the youth and this has implication for productivity. Therefore, innovative strategies need to be adopted to minimize the impact of natural disasters through local adaptation strategies and also reducing the occurrence of manmade disasters. A multi-stakeholder approach is required to intensify sensitization of citizenry while ensuring full enforcement of existing laws by law enforcement agencies.

1.9 Natural Resource Utilization

The Nanton district is blessed with a number of natural resources such as abundant shea and dawadawa trees. The abundant shea and dawadawa trees are predominant in the district and

provide livelihood opportunities for women who are into shea nut picking, shea butter extraction and dawadawa processing industries. Unfortunately, human activities such as charcoal burning, is gradually depleting the only economic tree species (the shea tree). Regulations in a form of bye laws are required to be put in place to check destruction of the shea and other economic trees and utilization of the natural resources.

1.10 Spatial Analysis

Nanton District has about Sixty-eight communities in a dispersed settlement pattern. This makes provision of basic infrastructure very difficult as people walk beyond the required distance to access certain services. This is particularly the case with provision of health services. The coverage looks good but the distance to health centers is beyond five kilometers in some cases.

1.11 Surface Accessibility

The Nanton District has a fairly good road network with some of the roads tarred while some of the roads still remains difficult to ply during the raining season due to poor drainage. The situation affects movement of people and goods on certain days due to severe rains. With reference to this, there is the need to construct new roads, drainage and improve upon the surface conditions of the existing ones to enhance socio-economic activities in the district.

The space economy of the district is explained further using the scalogram below. It provides an insight into how economic and social facilities and services are distributed across space. It also ranks the major settlements in the district according to the types and levels of services it has to attract people from other settlements in the district and beyond. Thus, it determines the levels of centrality of the settlements.

Considering the level of development of the district, 31 facilities and services were used to construct the scalogram. A population of 200 was also used as a benchmark for selecting settlements for the scalogram analysis.

Table 4: Scalogram for Nanton District

Settlement	Estimated population	SHS	JHS	Primary School	kinderga	Polyclini	Health Centre	Class	CHPS	TBA	Small	Dam	Hand	Borehole	KVIP	Fire	Police	Post	Tele	Rural	Restaura	Guest	Electricit	Filling	Primary road	Feeder	District Admin	District Lib	Area	Weekly	Daily	Total function	Centralit y Index	% of Total	Hierarc hy level	
WEIGHT		5	3	2	1	5	3	4	2	1	4	1	1	3	1	1	2	2	1	1	1	1	4	2	2	3	1	1	2	3	1					
Nanton	6,500		X	X			X			X	X			X	X	X		X					X	X	X	X		X	X	X			17	1,617	51	1st
Jana	1,000		X	X								X	X	X									X	X								6	824	26	2nd	
Zetigu	150									X		X	X	X									X		X							5	521	17		
Manguli	300			X										X											X						4	386	12			
Fazhini	600		X	X				X	X					X											X						7	148	5			
Janakpem	200									X				X					X												4	126	4			
Zieng	5,045		X	X				X	X			X	X	X	X				X							X					10	125	4	1st		
Sahanaayili	350			X								X	X	X											X						5	117	4			
Nanton-Yepalsi	470											X	X												X						3	104	3			
Dohi	452			X	X									X											X						5	86	2.7			
Kparigilanyi	360											X	X												X						3	84	2.7			
Gbungnaayili	165													X											X						3	78	2.4			
Kpunduli	4,203			X	X									X									X		X						5	78	2.4	1st		
Nyamandu	870			X						X				X											X						5	72	2.3			
Naprisi	420													X											X						3	73	2.3			
Goluri	168				X									X											X						4	69	2			
Gbumgbum	1,500			X										X											X						4	67	2			
Moya	363											X	X												X						3	66	2			
Saanvili	350		X	X	X									X											X						6					
Kpachelo	1,300			X										X											X						4	59	1.9			
Sahakpaligu	1,000		X	X				X						X											X				X		7	61	1.9			
Guntigli	2,110			X	X			X						X											X						6	61	1.9			
Batangyili	230											X													X						1	54	1.8			
Nanton Kurugu	4,500		X	X	X			X	X			X	X					X					X		X						11	55	1.8	1st		
Nyerigiyili	470				X				X		X	X	X												X						6	49	1.6			
Chankpem	450				X				X		X	X	X												X						6	49	1.4			
Sandu	2,129			X	X			X	X			X	X	X	X			X						X							10	42	1.3			
Guno	920			X	X							X	X												X						6	40	1.3			
Tahakpamo	120													X											X						3	35	1.1			
Janjori-Kukuo	1,200		X	X			X					X	X												X						6	30	0.9			

1.12 Hierarchy and Distribution of Settlements

Using the scalogram analysis above, the following criteria were used to determine the hierarchy of the settlements in the District based on the types and levels of services they offer to its people and other communities.

1st Order Settlement: Settlements with centrality indices of 50% and above of the total centrality of 3,154

2nd Order settlement: Settlements with centrality indices between 40 and 49% of the total Centrality of 3,154

3rd Order settlement: Settlements with centrality indices between 30 and 39% of the total Centrality of 3,154

4th Order settlement: Settlements with centrality indices below 20 and 29 % of the total Centrality of 3,154

5th Order settlement: Settlements with centrality indices below 10 % to 19% of the total Centrality of 3,154

6th Order settlement: Settlements with centrality indices below 0 % to 9% of the total Centrality of 3,154

Based on the criteria above, the scalogram analysis produced the order of settlements as constrained in Table 5.

Table 5: Hierarchy of settlements in the Nanton District

Order	No. Communities	Pop. Within the order	Names of communities
1 st	5	9,013	Nanton, Tampion, Nanton Kurugu, Zoggu, Zieng
2 nd	1		Kadua, Jana
3 rd	None		
4 th	1	2,002	
5 th	2	5,165	
6 th	49	32,961	

Source: NDA, 2025

From the order of settlements indicated in the table, there is a wide gap in service provision between the five first order settlements Nanton, Tampion, Nanton Kurugu, Zoggu, Zieng and the remaining settlements. None of the remaining settlements offers enough services to be ranked

Third or fourth. The only second order is Jana and kadua which offers only about half the services each of the first order settlements has. The outcome of the scalogram analysis overall demonstrates a marked geographical service distribution inequality. Figure 1.2 pictorially portrays the service distribution situation in the District.

1.13 Base Maps For Health, Education, Roads, Electricity, Sanitation, Dams/Dugouts, Water In The District

Fig 1.2: Spatial Distribution of Health Facilities

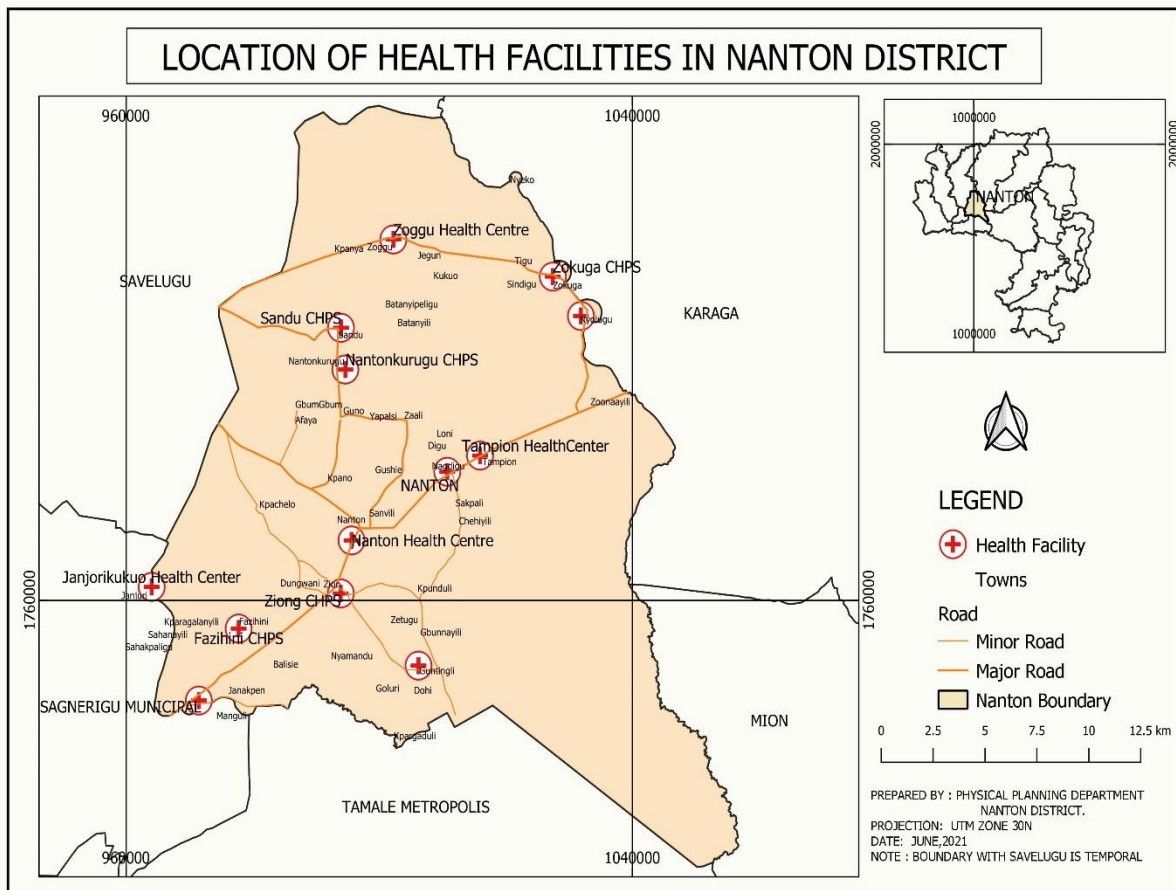


Figure 1.3: Spatial Distribution of Schools

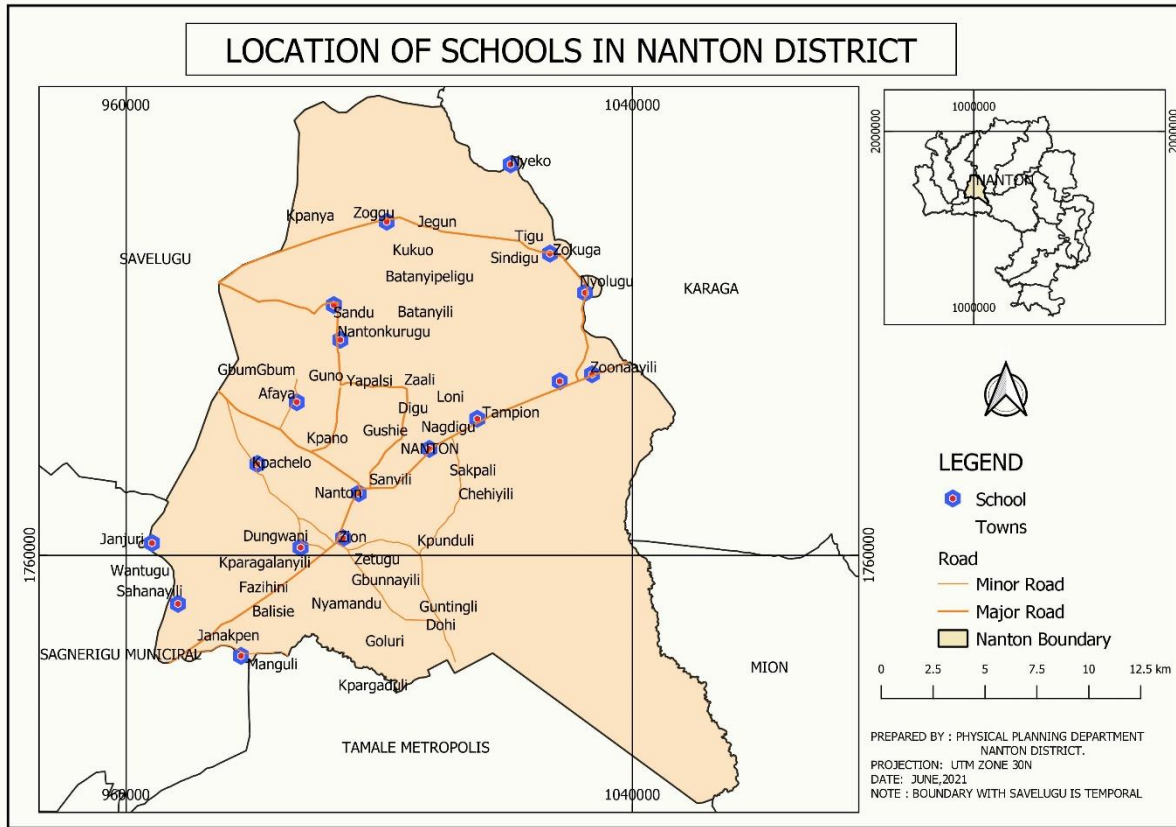


Figure 1.4: Road Network in the district

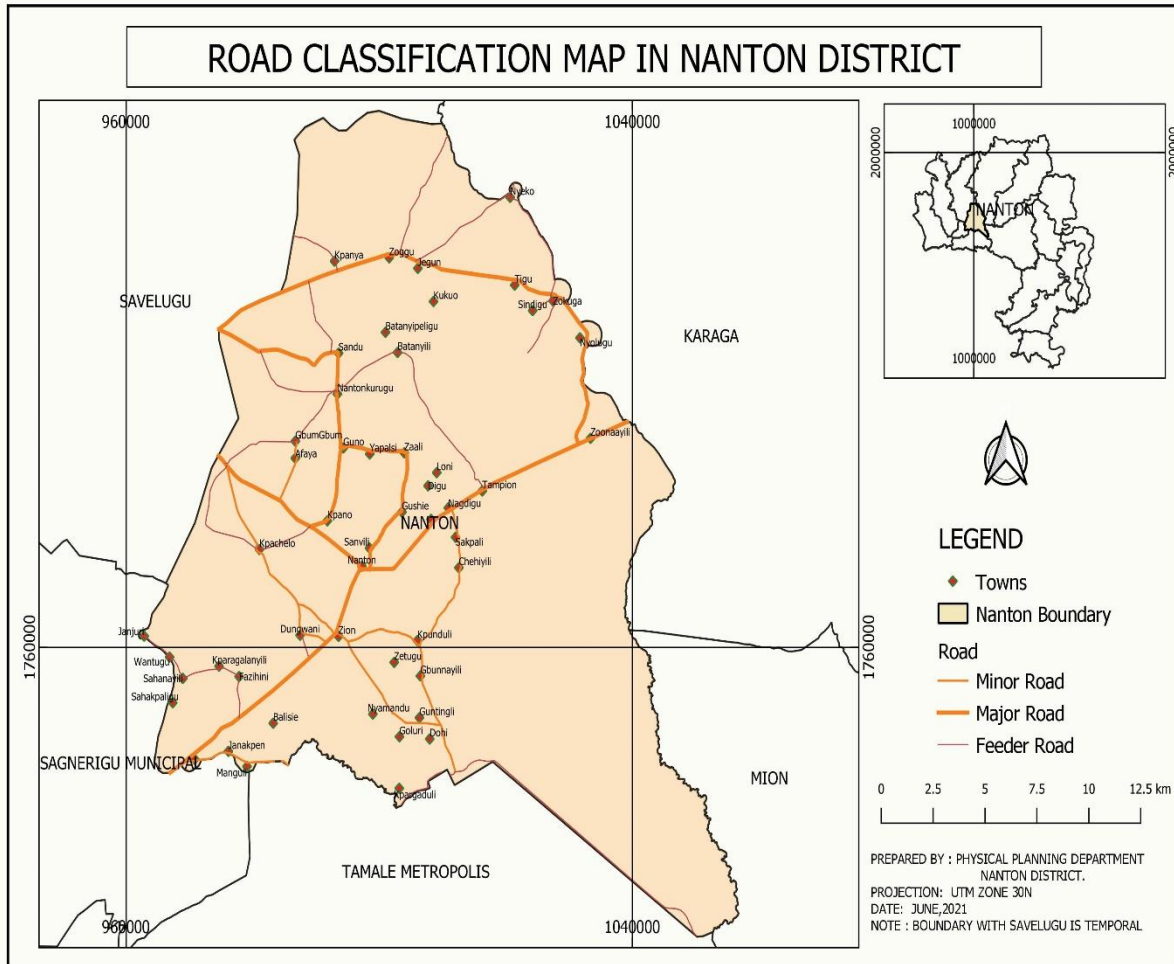


Figure 1.5: Telecom Masts distribution in the district

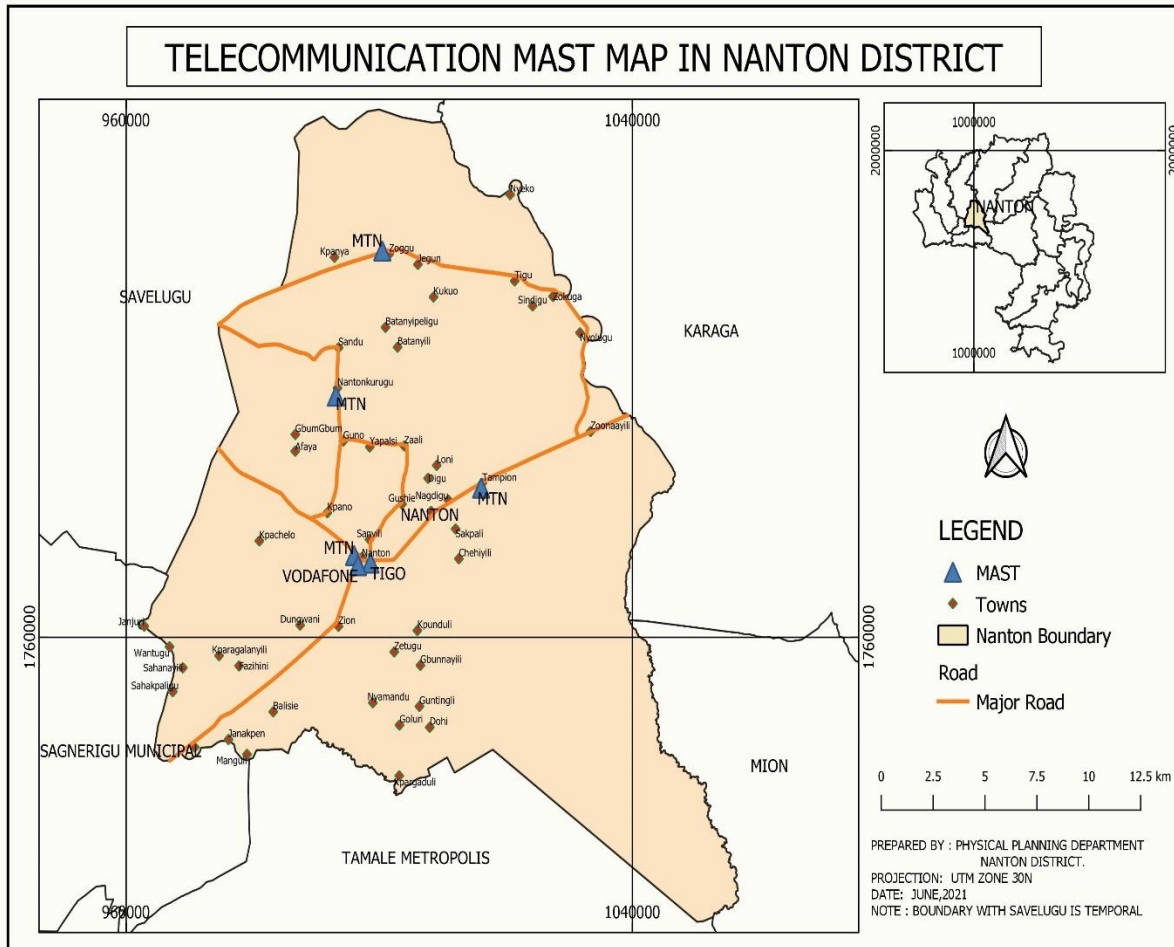


Figure 1.6: Drainage Facilities

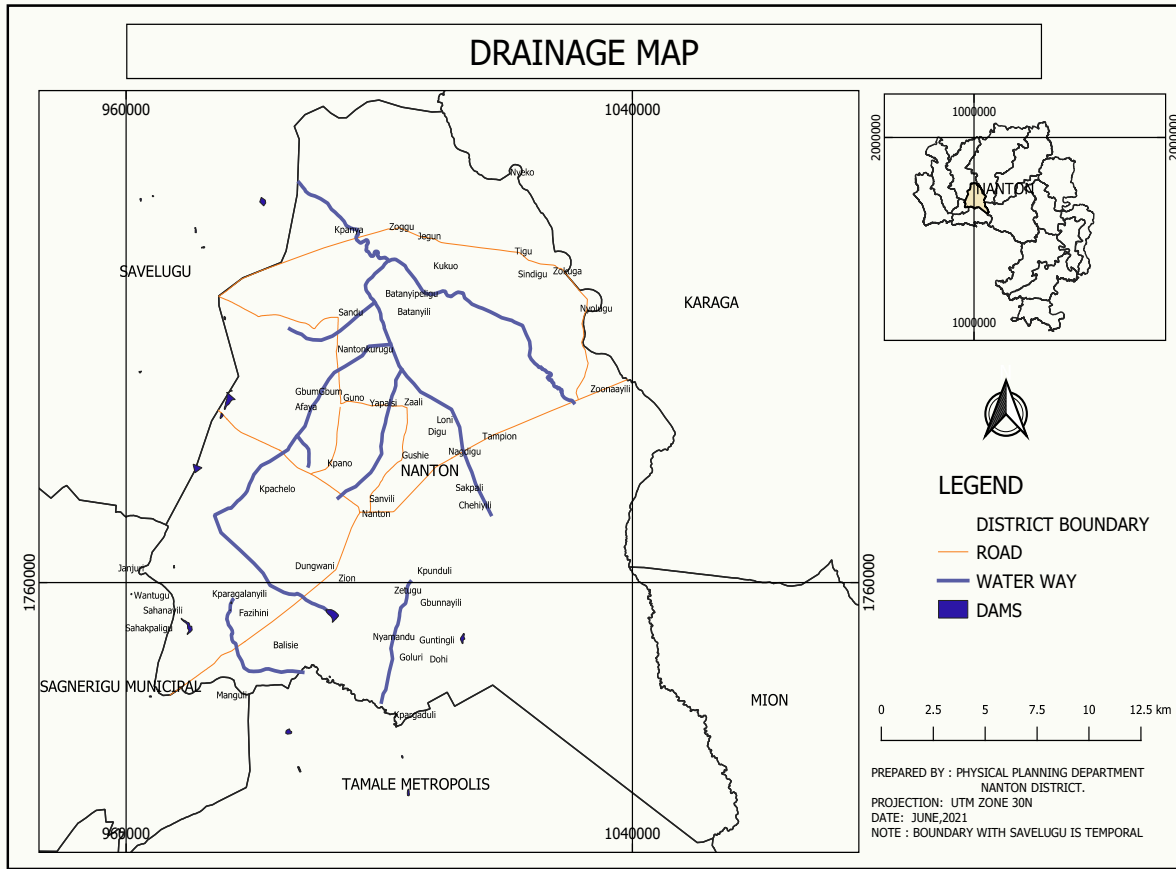


Fig 1.7: Public Latrine Coverage

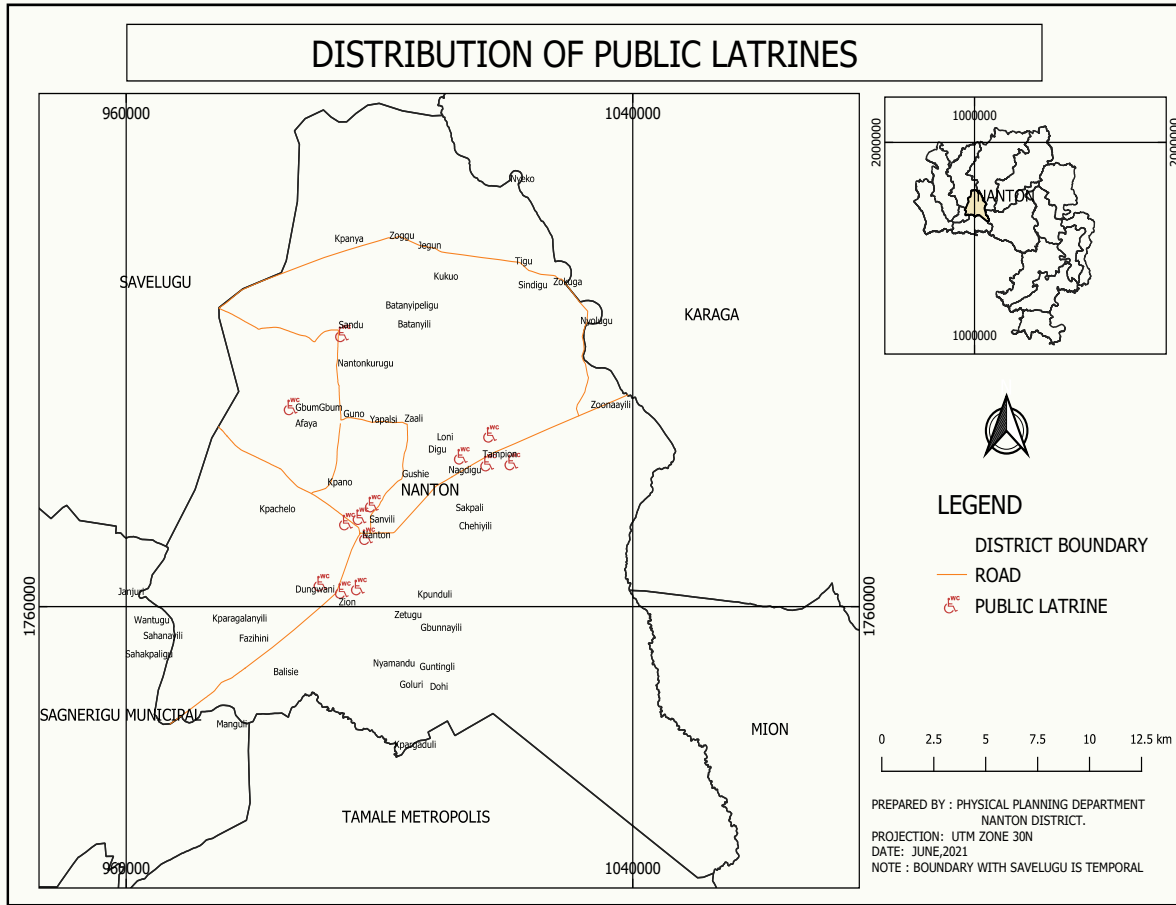
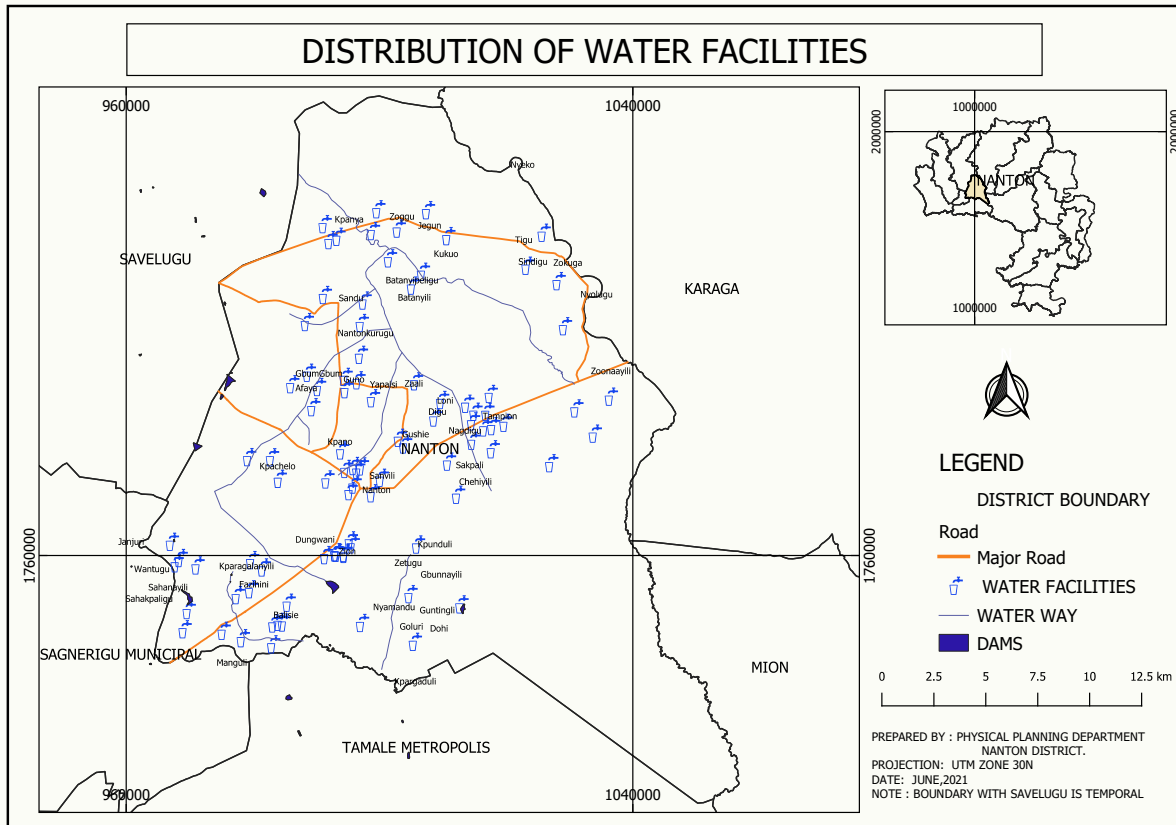


Fig 1.8: Water Facility Coverage



2.0: Demographic Characteristics

2.1 Population

The projected population in 2024 is 56,697, 28,011 been Males (49.8%) and 28,686 been females (50.2%). The population of the District is basically rural without some basic amenities like pipe bore water services. Rural-Urban migration is therefore common in the District especially during the dry season as majority of the people become unemployed after harvest.

2.2 Age- dependency Ratios

The age-dependency ratio is the ratio of the dependent-age population (those under age 15 and above ages 64 years) to the working-age population (15 to 64 years). The age-dependency ratio is often used as an indicator of economic burden that the productive portion of a population must carry. Countries with very high birth rates usually have the highest age-dependency ratios because of the large proportion of children in the population. The higher the dependency ratio, the more people a potential worker in the working class is assumed to be supporting and vice-versa.

Table 6: Population by Age, Sex and type of locality

Age Group	Type of Locality		
	Total	Urban	Rural
All Ages	56,697	15,458	41,239
0-14	25,485	7,224	18,261
15-64	29,385	7,841	27,213
65+	1,827	417	1,410
Age-dependency ratio	99.0	100	98.6
Child Dependency ratio	92.0	94.3	92.0
Old Age Dependency ratio	6.8	6.3	6.9

Source: Ghana Statistical Service, 2021 Population and Housing Census Projections for 2024

From Table 6, the age dependency ratio for the district is 99. This means that 99 persons in the inactive population group (child 0-14years and old age 65+ years) are dependent on 100 persons in the active population group (population between 15 and 65 years). Therefore, working population group cannot be described as being overburdened since one person in the active group takes care of one person in the inactive. From table 6, the working population group is larger than

the combined child and aged population of the district. This active group, if given enough capacity building, can be instrumental to the development of the economy of the district.

Table 6 also shows variation of the age dependency ratio by locality, indicating that, for rural parts of the district, there are 92 people in the child dependent age groups for every 100 persons in the working ages whereas for urban locality, there are 94.3 persons in the child dependent age group for every 100 persons in the working ages. Also, for the rural parts of the district, there are 7 people in the old age dependency group for every 100 persons in the working ages. Similarly in the Urban parts of the district, there are 6 people in the old age dependency group for every 100 persons in the working ages.

2.3 Ethnicity, Culture and Religion

The main ethnic group in the Nanton District is mole -Dagbani (95.6%), distantly followed by Mande (3.4%), Akan (0.5%) with the remaining ethnic groups (Grusi and others) constituting (0.5%). The District has five (5) Paramouncies with their divisional chiefs. The chiefs and people of the District celebrate some annual traditional Festivals such as Damba, Bugum festivals. The Bugum festival is an annual festival celebrated by most of the ethnic groups in the District. It is celebrated in the Lunar month of Bugum in Dagbani and Muharram in Arabic. Bugum is the first month of the lunar calendar of the Dagomba's. Below is the breakdown of representation of ethnic groups in the district. 98.7% of the District population are affiliated to the Islam religion, followed by 1.2% who are Christians and less than 1% of the population are belong to the Traditional religion, and no other religion.

2.4. Migration

Migration is a prevalent phenomenon in the Nanton District. Out-migration is common among the economically active age group especially young women. Many of these youth migrate to the southern part of the country and the regional capital in search of greener pastures; engage in Kayaye. This development is largely due to the limited economic opportunities in the District manifesting in the high levels of poverty among the people. The out-migration among the economically active age group has the tendency of depriving the District of the required manpower for a vigorous economic development. The out-migrants may also return with diseases including STDs acquired from other places to the District. There is therefore the need to accelerate economic

development in the District to engage some of the youth in income generating activities within the district.

3.0 Governance

The Nanton District was carved from the then Savelugu-Nanton District in 2017 by LI 2343. In order to enhance local governance and ensure grassroots participation in the governance process, the district is divided into two (2) Area councils with twenty (20) Electoral Areas. There are twenty-five (25) unit committees made up of five (5) member each elected in the 67 communities in the district.

3.1.1 The General Assembly

The Assembly is the highest deliberative, legislative and executive authority in the district. It is composed of 27 elected members including 20 elected Assembly Members, and 9 government appointed Assembly Members, one Member of Parliament representing the Nanton constituency and a District Chief Executive. There are two main committees of the District Assembly: The Executive Committee and the Public Relations and Complains committee. The five statutory sub-committees of the Assembly include; the Development Planning sub-committee, Finance and Administration sub-committee, Social Services sub-committee, Works sub-committee and Justice and Security sub-committee. Other non-statutory sub-committees of the Assembly include the agriculture sub-committee. Reports of the 5 statutory sub-committees and the non-statutory sub-committees are submitted to the Executive committee which is presided over by the District Chief Executive for discussions.

3.1.2 Sub-District Structures

The substructures of the district assembly are the basic units in the local government structure. To achieve subsidiarity, thus the principle that decisions should always be taken at the lowest possible level, the legislative Instrument (LI) 1589 was passed and this establishes sub-district institutions for grass root participation in decision making. In line with this objective, the district has two (2) Area Councils with 1 permanent office accommodation provided for the Tampion Area Council and a temporary one in Nanton Area Council to facilitate the operationalization of the Area Councils. The Nanton Area council requires a permanent office structure whiles that of Tampion

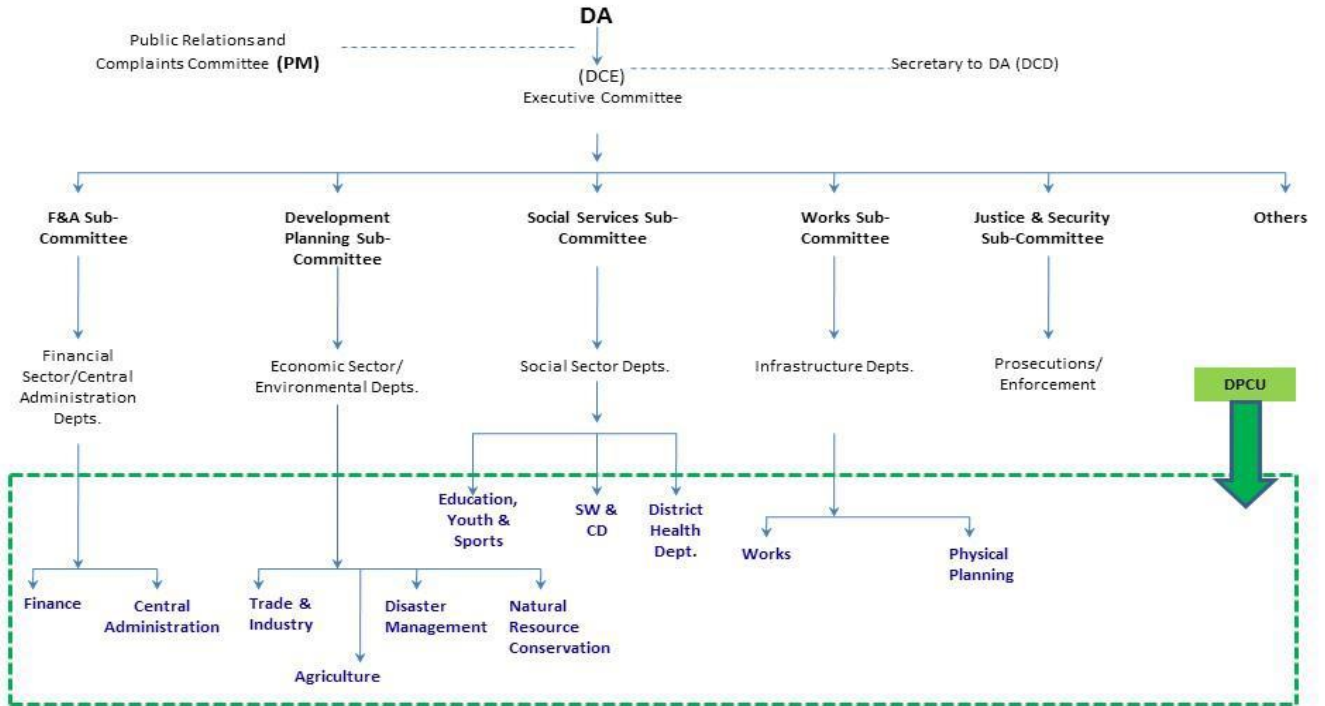
requires proper furnishing and provision of office equipment such as computers and accessories to facilitate data storage.

3.1.3 The Administrative Set-up

The Office of the District Assembly serves as the administrative center of the District Assembly. The District Chief Executive is the political head of the secretariat while the District Coordinating Director is the administrative head who provides guidance and direction to all the established decentralized departments of the Assembly and a principal advisor to the District Chief Executive. The Administrative structure is composed of Central Administration, Finance department, Works department, Education Youth and Sports Department, Department of Social Welfare and Community Development, Department of Agriculture, Disaster Prevention and Management, Waste management, and department of Health. There exist an Internal Audit Unit in the Assembly that ensures compliance to the internal control mechanisms and compliance to the Public Financial Management Act. 2016 (Act 921) and other financial regulations.

Figure 1.10: Structure of the Assembly

APPENDIX 1B
DISTRICT ASSEMBLY ORGANOGRAM



Source: LGS Administrative Instrument

3.1.4 Decentralized Departments of Nanton District Assembly

The Nanton District Assembly is supposed to pursue its development agenda in partnership with decentralized departments and agencies, in line with the Local Government Act, Act 936 of 2016. However, some of these institutions are yet to be established. The absence of these important institutions therefore hinders the development efforts of the district. Table 7 contains the decentralized institutions existing in the district.

Table 7: Decentralized Departments in the District

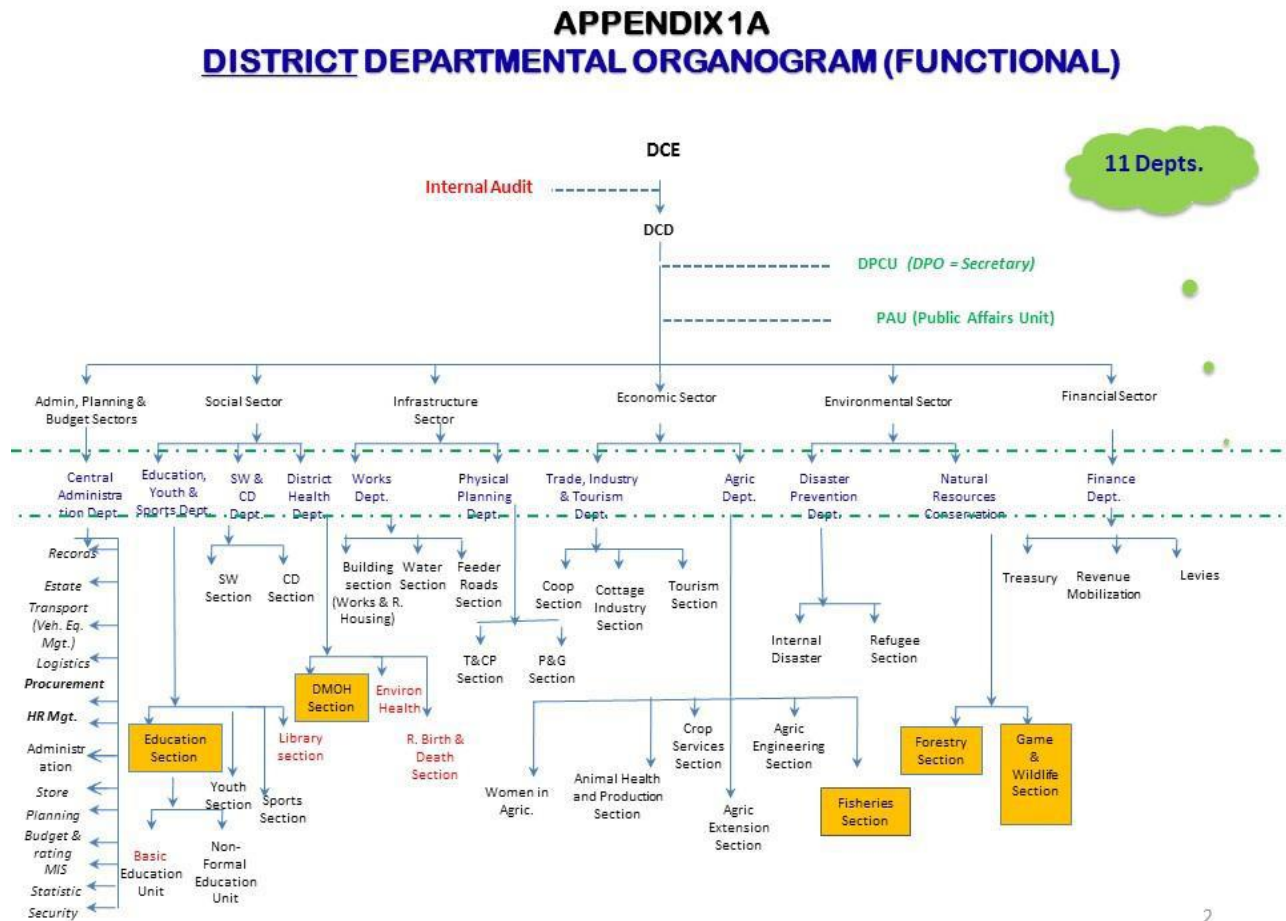
Nº	Department	Constituent	Availability
	Central Administration Department	Records	Available
		Estate	Not available
		Transport	Available
		Stores	Available
		Human Resources Management	Available
		Planning unit	Available
		Budget unit	Available
		Internal Audit	Available
		Procurement	Available
		Statistical Service	Available
		Births and Deaths Registry	Available
2	Education, Youth and Sports	Education	Available
		Ghana Library Board	Not available
3	Department of Social Welfare and Community Development	Social Welfare	Available
		Community Development	Available
4	Physical Planning Department	Town planning	Available
		Parks and Gardens	Available
5	Works Department	Public Works	Available
		Feeder Roads	Not available
6	Department of trade and industry	Trade	Available
		Cottage Industry	Not available
		Rural Enterprises Project	Available
7	Natural resource conservation	Forestry	Not available
		Games and Wildlife	Not available
8	Department of Health	Health Directorate	Available
		Environmental Health Unit	Available
9	Department of Agriculture	Crop division	Available
		Animal husbandry	Available
10	Disaster Prevention and Management Department	Fire Service	Not Available
		NADMO	Available
11	Waste management department	Waste management	Not available

Source: NDA, 2025

Table 8 : Other State Agencies in the District

	Agency	Availability	Remark
1	Commission for Human Rights and administrative Justice (CHRAJ)	Not available	Urgent need for CHRAJ in the district
2	Ghana Police Service	Police post available but operates from Nanton District	Operational
3	Information Service Department	Available	Under resourced
4	National Commission for Civic Education	Available	Operational
5	Ghana Revenue Authority	Available	Not Operational

Figure 1. 11: Departmental organogram



Source: LGS Administrative instrument

4.0 Development partners (CSOs/NGOs)

The Civil Society Organizations, Non-governmental Organizations and other development partners play a crucial role in the governance and development process in the district. The District collaborates with them to improve the general standards of living of the people in the District in many of the sectors including governance, agriculture and food security, climate change and adaptation, women empowerment, education, health water and sanitation, child right advocacies among others. Some of the organizations and their areas of interventions are spelt out in table 9.

Table 9: Development Partners/NGOs in the District

NO.	ORGANISATION	INTERVENTION AREAS	COVERAGE
1	Ghana Productive Safety Net Project-World Bank	Governance Social Protection Livelihood Empowerment	Districtwide

Source: NDA, 2025

5.0 Social Services

Social services are those provided to the citizenry to enhance their general well-being and social welfare. These include education, health delivery as well as water and sanitation provision. The provision of all these services is vigorously pursued by the Nanton District. Details of the types, location, quantities, and qualities of social services available in the district are presented in the ensuing sub-sections.

5.1 Education

Education is an important aspect of societal development. It is the process of acquiring knowledge, skills, values and attitudes to fully develop individual capacities for societal well-being. According to the United Nations Development Programme, (2011), there is a relationship between education, human resource development and economic growth. To ensure effective monitoring and supervision, the Nanton District is divided into five (5) circuits.

5.1.2 Educational Institutions and Enrolment

There has been a gradual increase in the number of educational institutions in district since its creation in 2018. Currently, the Nanton District has 68 basic schools, comprising of 48 KG/ Primary Schools, 20 Junior High Schools and 1 Senior High Technical School. The SHTS began as a private Community Day SHS in October 2023 which was absorbed into government system in April 2024. Due to the dispersed settlement

pattern in the district, some remote communities still do not have any educational facility. Thus, children from such communities trek long distances to access basic education. Also, the absence of boarding facilities at the SHTS affects accessibility by BECE candidates who do not have relations or afford rent in Nanton Township. There is therefore the need to expand infrastructure at all levels especially boarding facilities at the SHTS to increase enrolment and sustain students' studies.

As part of the implementation of the Early Childhood Care Development policy, the kindergarten (KG) was incorporated into the formal basic education system and each primary school is expected to have a KG attached to it. This policy has vigorously been pursued in the last four years. However, the challenge remains the poor classroom infrastructure for these vulnerable children. Therefore, the need to prioritize KG and SHS infrastructure expansion in the next plan.

Table 10: Educational institutions in the Nanton District

LEVEL	PUBLIC SCHOOLS				PRIVATE SCHOOLS			
	2022	2023	2024	2025	2022	2023	2024	2025
Nursery	N/A-	N/A	N/A	N/A	-	3	5	6
Kindergarten (K.G)	-32	43	45	48	-	3	5	6
Primary	-32	43	45	48	-	0	3	3
Junior High School	13	17	19	20	-	0	1	1
Senior High School	-	1	1	1	-	N/A	N/A	N/A

Source: GES-Nanton District (2025)

Total enrolment in all public basic schools and the SHTS in the District as at July, 2025 is 15,237 comprising of 3,424 in the KG, 9,067 in Primary Schools, 2,597 in Junior High Schools and 149 in SHS. Whiles the private schools recorded a total of 2, 629 within same period. The percentage of total enrolment of boys to girls is 56.11% and 45.88% respectively for all levels combined. Enrolment had increased at all levels from 2022 – 2025 except KG that witnessed a slight decline. Enrolment had been boosted due to interventions such as increased sensitizations, empowering PTA/SMCs on their duties, effective schools monitoring/supervision by DEO/DEOC, capitation/learning grants benefits, learning materials support to students as well as donor support programmes. However, despite this success, other interventional programmes like the School Feeding Programme and. MY FIRST DAY AT SCHOOL should be revisited. However, infrastructure expansion at all levels is key to enrolment drive.

Table 11 shows the enrollment in the educational institutions in the district.

Table 11: Educational Facilities and Enrolment in the District

LEVEL	PUBLIC SCHOOLS				PRIVATE SCHOOLS			
	2022	2023	2024	2025	2022	2023	2024	2025
Nursery	N/A	N/A	N/A	N/A	182	193	559	759
Kindergarten (K.G)	3610	3156	3688	3424	820	841	898	928
Primary	6697	6865	7529	9067	730	787	892	928
Junior High School	1791	2035	2128	2597	0	0	12	14
Senior High School	0	11	145	149	0	0	0	0
TOTAL	12,098	12,067	13,490	15,237	1,732	1,821	2,361	2,629

Source: GES-Nanton District (2025)

5.1.3: B.E.C.E Performance

The performance of pupils in the Basic Education Certificate Examination in the past years had improved significantly from 53.85% in 2022 to 90.82%. Several factors including, improved accessibility, effective supervision, support from the District Assembly, continuous district wide mock exams etc, have contributed to this improved B.E.C.E performance in the district. There is the need to sustain these gains in the coming years.

Table 12 : Trend Analysis of BECE Results in the District from 2022 - 2025

Number of candidates	YEAR											
	2022			2023			2024			2025		
	M	F	T	M	F	T	M	F	T	M	F	T
No. registered	338	183	521	419	272	691	450	288	738	528	386	914
No. that Wrote	337	180	517	419	272	691	447	283	730	527	383	910
No. that passed												
% Passed	51.93 %	56.67 %	53.85 %	79.95 %	88.24 %	83.21 %	88.31 %	94.74 %	90.82 %	N/A	N/A	N/A

Source: GES Nanton District (2025)

5.1.4: Teaching Staff Situation

Table 13 depicts the pupil and teacher enrolment as well as the Pupil-Teacher Ratio. Kindergarten has a 1:30 teacher-pupils ratio this implies one teacher to 30 pupils which is higher than the national PTR standard of 1;25. The primary, JHS and SHS figures are level recorded a 1:32, 1:13 and 1:6 respectively. These levels recorded low PTR compared to national standard of 1;35.

This analysis shows teacher surplus but in real schools' situation in the district, this does not apply and there is still challenge of teacher deficit due to larger class sizes and multiple stream classes mostly in bigger communities/towns which required about 2 – 3 teachers to handle a class especially at the KG and Primary levels and also the subject - teacher syndrome at the JHS and SHS.

The district's trained teaching staff situation is contained in table 14.

Table 13: District Teaching Staff situation

LEVEL	Enrolment	Teachers	Teacher-Pupil Ratio
Kindergarten	3,424	116	1:30
Primary	9,067	280	1:32
JHS	2,597	194	1:13
SHS	149	24	1:6
Total	15,237	614	

Source: GES –Nanton District (2025)

Table 14: Teachers profiles (only public schools)

LEVEL	TEACHERS							
	2021		2022		2023		2024	
	T	U.T	T	UT	T	U.T	T	UT
K.G			72	2	94	11	93	32
PRIMARY			193	14	167	31	176	39
JUNIOR HIGH SCHOOL			95	1	105	6	103	8
SENIOR HIGH SCHOOL			N/A	N/A	N/A	N/A	N/A	N/A

T = trained teachers

U.T = untrained teachers

Source: GES –Nanton District (2025)

5.1.5: Educational infrastructure

Provision of educational infrastructure is one of the core mandates of the District Assembly. This has vigorously been pursued in the past years, resulting in the provision of a total of 322 classrooms across all schools' level in the district. However, much needs to be done in order to clear the deficit of about 146 classrooms in the district. The situation is more pronounced at the pre-school level where children in some schools are either exposed under trees or housed in dilapidated structures. Table 15 presents data on the classroom situation in the district.

Table 15 : Classroom situation in the district.

LEVEL	CLASSROOM SITUATION IN BASIC SCHOOLS				
	2021	2022	2023	2024	No. Needed (Deficit) per the 2024 enrollment figures
K.G	-	-	-	72	78
PRIMARY	-	-	-	191	44
JUNIOR HIGH SCHOOL	-	-	-	45	15
SENIOR HIGH SCHOOL	-	-	-	14	9

Source: GES –Nanton District (2025)

Table 16: Other facilities

LEVEL	No. OF SCHOOLS	TOILETS	URINALS	WATER	ELECTRICITY
BASIC SCHOOLS	68	30	25	30	51

Source: GES –Nanton District (2025)

Unfortunately, 48% of the District basic schools have safe source of drinking water, urinals and toilet facilities. However, when it comes to electricity, majority of schools thus; 82% of schools have electricity. This situation can effectively impact teaching and learning of ICT.

Table 17: Furniture situation

Level	Pupil/Student population	Mono Desk		Dual Desk		Teachers tables/chairs	Deficit
		# available	Deficit	# available	Deficit	# available	Deficit
KG	3424	N/A	N/A	0	700	N/A	N/A
Primary	9067	N/A	N/A	1,082	2,441	N/A	N/A

JHS	2597	N/A	N/A	419	484	N/A	N/A
SHS	149	N/A	N/A	201	N/A	10 chairs	14 chairs 24 tables
Total	15,237	N/A	N/A	1,501	3,625	N/A	N/A

Source: GES –Nanton District (2025)

1.5.1.6: Key challenges in the education sector

- Huge deficit of furniture across the various levels and circuits
- Inadequate/poor infrastructure at all levels
- Low academic performance. E.g inability of some students to read at grade levels
- Drop out of pupils in schools especially in remote communities
- Inadequate teachers’ accommodation across schools in deprived communities
- Inadequate logistics for effective supervision
- Challenges with the right age enrolment
- Accessibility to education is still a challenge in some communities, especially pupils under six years
- Poor IT infrastructure in almost all basic schools
- Inadequate basic services like water and sanitation facilities in many schools
- Inadequate teachers at the basic level

5.2 Health

One of the key components and a focus area for social service delivery is health service delivery. To bridge the access gap in health service delivery, the Nanton District has four (5) Health Centers, and twelve (12) functional CHPS compounds, which provides curative and preventive services to the people. Unfortunately, the District has no hospital as such, all referral cases are made outside the District capital to the hospitals Tamale. This situation has serious consequences for both clients and health staff. However, the Government’s agenda 111 hospitals initiative is currently been implemented in the district, thus a hospital is been built for the district. It is the hope of the district that contractors will expedite action for the project to be completed and operationalized to cater for the greater health needs of citizens of Nanton district and beyond.

The facilities render OPD and ANC services among others. Curative and preventive health is carried out in the five (5) Health Centers, and the twelve (12) CHPS Zones across the district. The district has eighty-nine (89) immunization/outreach points providing preventive services including Child Welfare Clinics, health education and promotion and nutrition services.

Drug outlets are large part of the private health sector. In the district, these outlets include chemical sellers and drug peddlers. There are a number of Chemical sellers and drug peddlers in the district. The Chemical sellers are trained personnel on license to sell over the counter prescriptions and the drug peddlers are mostly semi- literates and very good sales men who sell medicines in the markets and during public gatherings.

There are three categories of drug peddlers in the district namely: Peddlers of biomedicine, Herbal Medicines and “neo-herbalists”. Peddlers of biomedicine are found in rural areas and move from community to community and market to market on bicycles. The “neo-herbalists” sell both herbal and modern drugs and sometimes use modern instruments along with traditional medicines. The herbalists include bonesetters and traditional birth attendants.

Health Infrastructure

The District has no District hospital and therefore depends on the Savelugu municipal hospital and the Tamale Teaching Hospital as a referral center for the rest of the health facilities.

There are ten operational CHPS zones with compounds’, thus Nagdigu CHPS, Sandu CHPS, Guntingli CHPS, Nanton kurugu CHPS, Fazihini CHPs, Nyolugu CHPS, Zieng CHPS, Jana CHPS, Nayilifong CHPS and Zokuga CHPS. However, there are four CHPS without compounds namely, Sahani CHPS, Nyeko CHPS, Sahakpalgu CHPS, and Sanvili CHPS.

There are four (4) Health centres and these are located at Nanton Health Centre, Tampion Health Centre, Janjori-Kukuo Health Centre, and Zoggu Health Centre.

These structures are yet to be handed over to District Health Directorate for use; Zoonayili CHPS Compound, Gbumbum CHPS compound and Kpenduli CHPS compound.

All the above structures are Public Health facilities and therefore belong to the Government. There are no private facilities within the district except a few chemical shops

5.2.1: Volunteers (CBSVs, CBAs and TBAs)

There are about one hundred (100) Community-based Surveillance Volunteers (CBSVs) who assist with surveillance activities and two hundred and twenty-five (225) Community Based Agents (CBAs) supporting nutrition and health promotion activities in all the sixty-seven (67) communities in the district. There are twenty-five (25) Traditional Birth Attendants (TBAs) who were previously trained in delivery at community level but are now reoriented to support and refer pregnant women to the health facility for skilled delivery.

5.2.2: The District Health Management Team (DHMT)

The DHMT is the management body of health services in the district. The core DHMT members include The District Director of Health Services (leader of the team), the District Public Health Nurse, the Disease Control Officer, the District Nutrition Officer, the District Accountant, and the Health Information officer. The Team has the overall responsibility for planning and management of health care in the district.

5.2.3: The Staffing situation of the health sector in the district

The quest to provide effective health service to the people is being hampered by the inadequacy of health professionals in the district. For instance, the Nurse-Patient ratio stands at 1:321 while Doctor-Patient ratio is 1: 50,767. Other critical staff such as midwives are equally inadequate in the district. These ratios have given ample testimony to the fact that all is not well with the availability of health personnel in the District. The health personnel in the various health facilities in the district are woefully inadequate and as such pressure is put on the few available staff. There is therefore the need for more health personnel to adequately cater for the health needs of the people. Table 18 shows the situation in the district.

Table 18: Staff Strength and Constraints in the health sector

STAFF CATEGORY	NORM	NUMBER IN THE DISTRICT	STAFF GAP
DDHS	1	1	
Public Health Nurses	9	1	8
Disease Control Officers	2	4	2
Health Information Officers	31	1	30
Nutrition Officers	2	5	-
Administrators	2	2	-
Physician Assistant-Medicals	6	2	4
Community Health nurses	112	28	84
Gen. Nurses	9	20	-
Ens	112	40	72
Midwives	33	14	19
Psychiatry Nurse/Officers	5	2	3
Drivers	4	1	3
Orderlies	24	5	19
Watchman	8	2	6
TOTAL	360	128	250

Source: NDHMT 2025

5.2.4: Status of CHPS implementation

CHPS remains the tool towards providing primary health care service to the population. CHPS has therefore contributed greatly towards accessibility of health care providers in the district. The district has twenty (20) functional CHPS zones with 16 CHPS compounds. This is to ensure that every electoral area in the district has a CHPS compound. Communities have been sensitized and CHOs scheduled to these communities for operations. What is required in the next planning cycle is to provide infrastructure for effective operations.

Some of the activities undertaken by the CHPS zones in the year include; Home visits, Immunization services, growth monitoring and promotion, community durbars and meetings, ANC services, Emergency delivery services, Post natal services, Family Planning services and Treatment of minor ailments

5.2.5 Community-based Management of Acute Malnutrition (CMAM)

The district for the past 3 years has not been able to achieve the target when it comes to CMAM case admissions. This translates to the sub-district level as well. The downward trend started since UNICEF stopped supporting the district with Ready-to-use-Therapeutic food (RUTF) as

caregivers prefer a combined package of nutrition counselling and food ration instead of only counselling as is offered now during CMAM clinics

Table 19: Number of SAM cases discharged over the period (2024 trend)

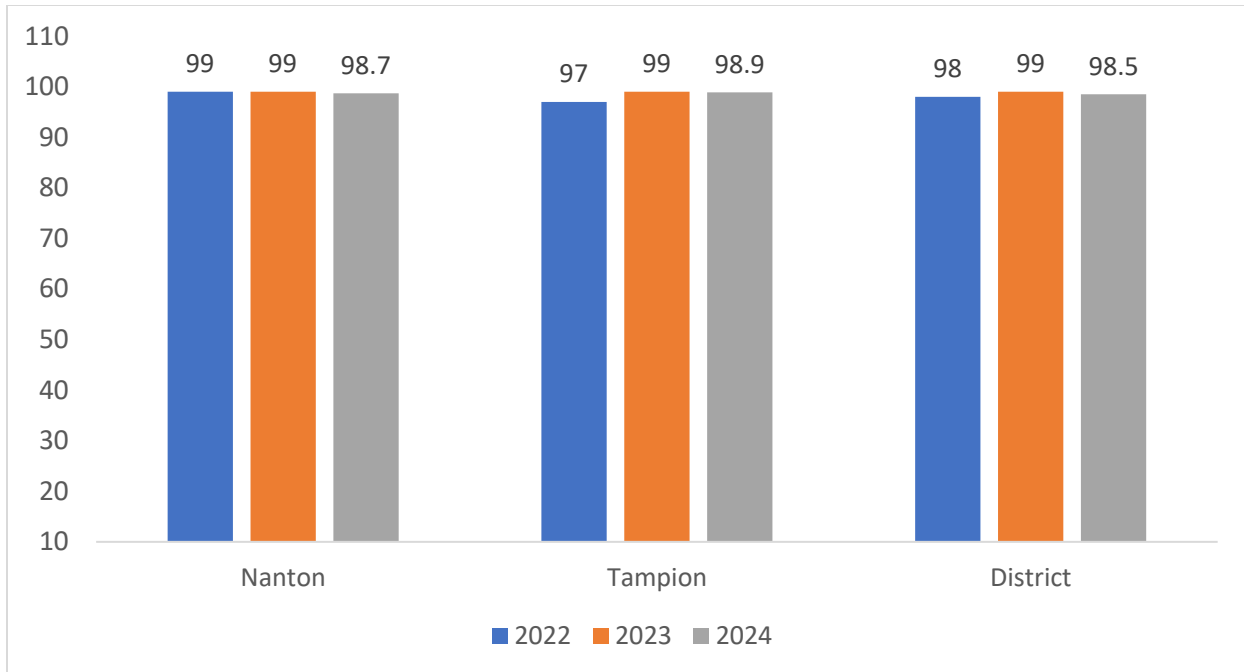
Year	Total case admissions	Cured rate	Defaulter rate	Non-recovery rate	Death rate
2022	99	7.1	0	0	0
2023	303	32.6	0	2.6	0
2024	89	31.4	5.6	38.2	1.1

Source: NDHMT 2025

5.2.6 Community Infant and Young-child Feeding (C-IYCF)

Early initiation of breastfeeding

Over the past three years, the district has always exceeded the target of 95% of babies breastfeeding within 30 minutes after delivery though a marginal decrease was recorded from 99% to 98.5% in the year under review. Also, there was a reduction in all sub districts compared to the previous year

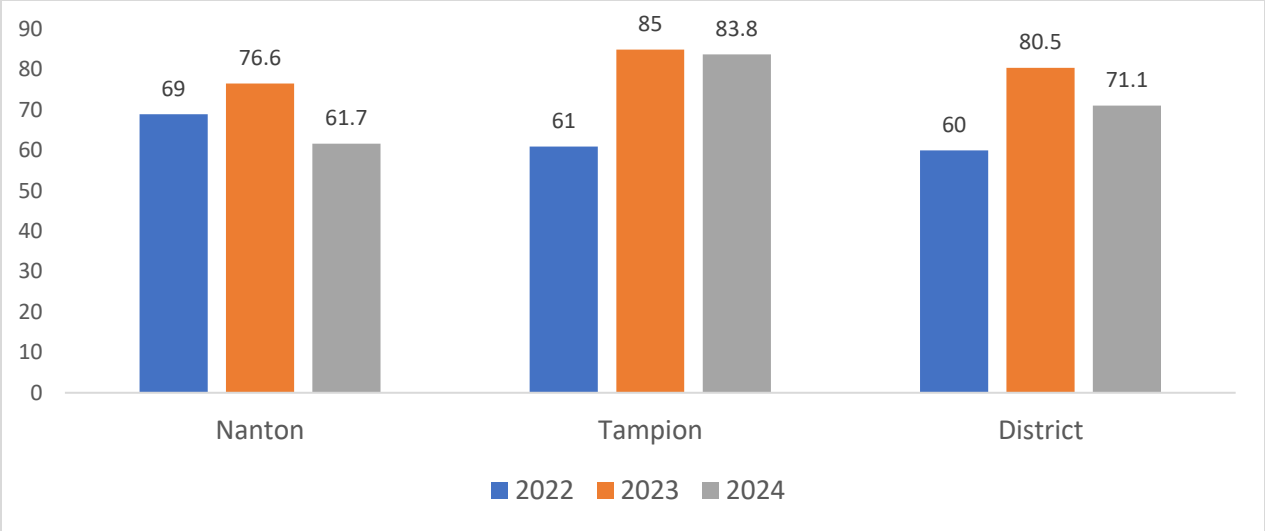


Source: NDHMT 2025

5.2.7 Vitamin A Supplementation (VAS)

3.4.1 Vitamin A Supplementation among children 6 – 59 months (By semesters)

Putting the two cohorts together, the district recorded a decrease of 71.1% than the previous year of 80.5% in 2023 even though the district couldn't achieve the 85% target. While Tampion sub district was able to achieve 83%, the remaining sub district which is Nanton sub underperformed with 61.7% than the performance of previous year of 76.6% in 2023 respectively.



Source: NDHMT 2025

5.2.8 Anemia Prevention and Control

3.5.1 Percentage of Pregnant women with Hb checked at registration

As a district, there was a marginal appreciation in the percentage of pregnant women who had their Hbs checked at registration during ANC. This trend was similar in the sub districts too. Most facilities use the Hemocue machine in testing the Hb of pregnant women. Even though not all facilities have the hemocue device, clients are referred to Savelugu hospital for the test. The imbalances are as a result of the lack of microcuvettes to use with the Hemocue devices provided by USAID. This makes Hb testing at the community and facility levels very difficult.

3.5.2 Prevalence of anaemia among pregnant women at registration

Anaemia checked at registration stands at 93.7% in 2024. Tampion Sub district decreased from 96.9% to 87.6% in the year 2024 while Nanton sub district appreciated from 95.4% to 98.1% in 2024 year under review. Anaemia at registration showed an increase from 32.2 in 2023 to 51.1 in 2024. There is the need to intensify health education for pregnant women

Table 20: Percentage of Pregnant women with Hb checked at registration

Data	Percentage of pregnant women with HB checked at registration			Percentage of pregnant women anaemic at registration		
	2022	2023	2024	2022	2023	2024
Nanton	95.8	95.4	98.1	36.3	32.7	51.9

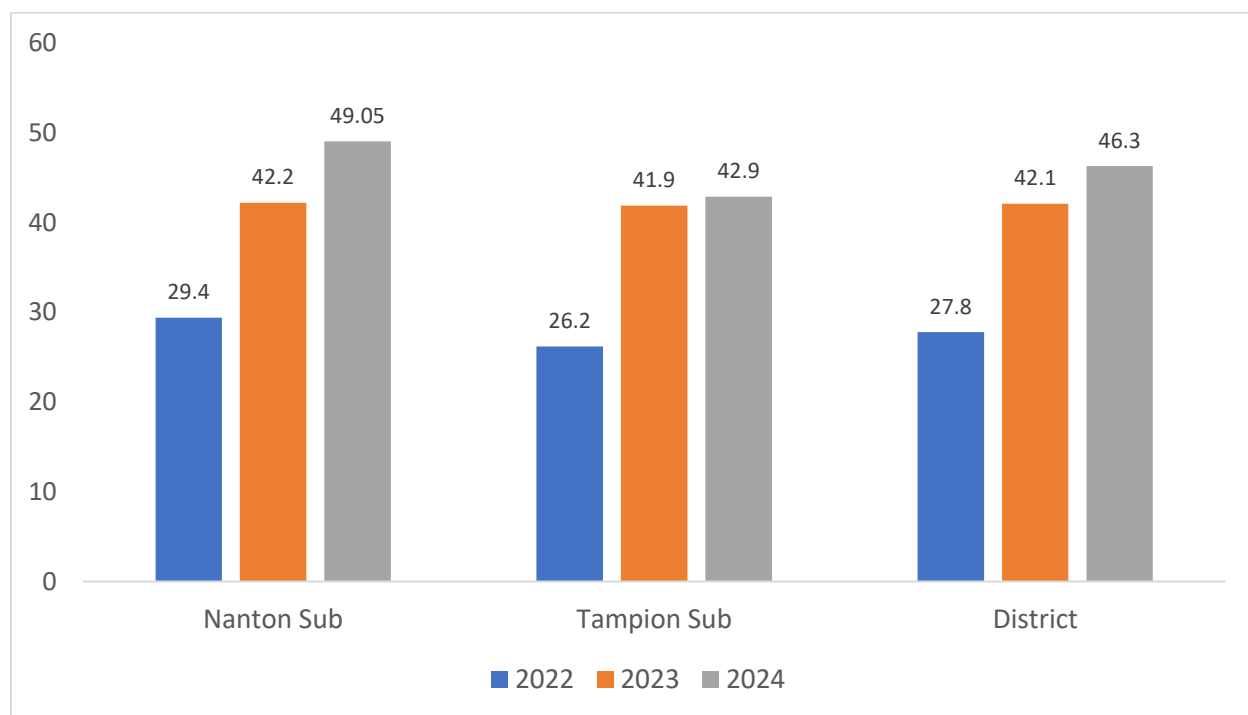
Tampion	96.9	96.9	87.6	26.1	31.5	50
District	96.3	96	93.7	31.7	32.2	51.1

Source: NDHMT 2025

5.2.9 Percentage of anemia among pregnant women at 36 weeks (moderate and severe)

Anaemia in the district still remains a challenge of public health concern. Over the past three years the prevalence among pregnant women at 36 weeks of gestation has seen an increase from 42.1% in 2023 to 46.3% in 2024 higher than the acceptable limit of 25%. It is however alarming that anaemia in Tampion sub stood high at 42.9% at the end of 2024. While Nanton sub recorded the highest levels of anaemia (49.1%) in 2024.

The anaemia situation in the district could be deceptive as the testing capacity of the health facilities has decreased possibly due to unavailability of microcuvettes as stated above.



Source: NDHMT 2025

5.2.10 Prevalence of severe anemia among pregnant women at registration and at 36 weeks

Both sub districts recorded the highest number of the high prevalence of severe anaemia at both registration and at 36 weeks. The district as a whole also saw an increase in severe anaemia from 2.3% at 36 weeks of gestation as compared to the previous year of 1.9%. There was also an increase in severe anaemia at registration to 5% from the 3.8% recorded the previous year.

Table 21: Prevalence of severe anaemia among pregnant women at 36 weeks

Data	Percentage severe anaemia at registration			Percentage severe anaemia at 36 weeks		
	2022	2023	2024	2022	2023	2024
Period						
Nanton	0.95	4.6	5.4	1.8	2.4	1.8
Tampion	1.2	2.7	4.3	1.8	1.5	3
District	1	3.8	5	1.8	1.9	2.3

Source: NDHMT 2025

5.2.11 Health Promotion and Education

The main focus is to educate caregivers about importance of child health service in the district. There has been a number of health topics discussions organise within the district in various forms such as durbars, school health, child welfare clinic, ANC, OPD services, churches, mosque etc. The district shall continue to sensitize community members through community durbars and community meetings.

Category of Health Topics	2022	2023	2024
Communicable diseases	293	473	439

Reproductive Health (Safe motherhood)	349	461	531
Reproductive Health (Family Planning)	360	450	501
Nutrition	434	562	622
Child Health	380	497	552
Personal/Environmental Hygiene	287	342	368

Source: NDHMT 2025

5.2.12 Top 10 causes of OPD Attendance

Malaria continues to be the top cause of OPD attendance in the district from 2022 to 2024 end of year. Next to malaria has consistently been URTI and Diarrhoea.

Interestingly, Pneumonia that has never featured in the top was positioned at 10th with 170 cases in 2024. This is very alarming, coupled with the higher number of diarrhoea cases of 2024 which seem higher than previous years, this point to the fact that the sanitation situation in the district is getting poorer with time.

SN	Morbidities- 2022	Cases	Morbidities- 2023	Cases	Morbidities- 2024	Cases
1	Malaria	4580	Malaria	5417	Malaria	5234
2	URTI	2771	URTI	2434	URTI	3327
3	Diarrhoea Diseases	1734	Diarrhoea Diseases	1908	Diarrhoea Disease	2024
4	Septiceamia	603	Septiceamia	777	Septiceamia	1190
5	Anaemia	278	Ulcer	274	Anaemia	557
6	Ulcer	190	Anaemia	257	Ulcer	473
7	UTI	164	Skin Disease	158	Epilepsy	263
8	Typhoid Fever	154	Hypertension	148	UTI	227
9	Hypertension	145	UTI	141	Hypertension	187
10	Pregnancy complications	137	Typhoid Fever	109	Pneumonia	170

Source: NDHMT 2025

5.2.13 Morbidity and Mortality

The incidence rates of diabetes and hypertension is low most likely because the index of case suspicion is low. Fortunately, the district has not recorded cases of mortality in the past years

The district failed to maintain its still birth rate of 0% in 2023 to 0.86 in 2024.

Table 22: Morbidity and Mortality Rates, Nanton District, 2022 - 2024

INDICATORS	2022	2023	2024
Incidence rate of diabetes (using OPD as proxy)	0	0	0.07
Incidence rate of Hypertension (using OPD as proxy)	0.3	0.3	0.57
Institutional all-cause mortality rate	0	0	0
Institutional Maternal Mortality Ratio	0	0	0
Institutional Neonatal Mortality Rate	0	0	0
Still birth rate	0	0	0.86

Source: NDHMT 2025

5.2.14 Health sector challenges

- Inadequate and weak transport
- Irregular supply of logistics (SP, RDTs, Vaccines, syringes, CWC cards)
- Inadequate and Poor state of existing infrastructure; Tampion H/C, Nanton and Zoggu H/C
- Inadequate/Lack of equipment e.g. Vaccine fridges, BP apparatus, in majority of the facilities
- Delay in Payment of NHIS claims
- Shortage supply of antipsychotic and anticonvulsant drugs.
- High attrition rate of staff
- Lack/ **Inadequate** accommodation for staff
- Shortage of water during dry season

5.0 Water

Access to potable water in the district is relatively high. About 58.2% of the people in the district have access to safe water supply for both drinking and domestic activities. However, even though the coverage seems good it does not favor the dispersed settlement pattern of the District as many communities do not have potable water and people have to walk longer distances in search of

water. Currently, there are three (3) Small town water systems of which two (2) are functional. In terms of boreholes, there are 222 boreholes of which 195 are functional. The District therefore considers access to potable water a critical development concern. Table 23 is the water access situation in the district.

Table 23: Access to Water and sanitation facilities in Nanton District

S/N	Indicator	2021	2022	2023	2024	2025
1	Percent of population with sustainable access to safe water sources	51.8%	52.5%	53.7%	57%	58.2%
2	% served with boreholes	74%	77%	82.1%	86%	89.43%
3	% served with pipe borne water	0	0	0	0	0
4	Proportion of population with access to improved sanitation (flush toilets, KVIP, Household latrine)	7,107	9,226	12,459	14,138	14,412

7.0: Sanitation

The sanitation situation in the District is appalling. Houses are also far from available dump sites. As a result, many houses have small damp sites where solid waste is dumped and burnt periodically. Overall, only 2.3% of households are served with solid waste management services.

Similarly, liquid waste in the district is mainly disposed of indiscriminately. The waste water drainage system in the district is mainly of natural gutters created by running water. Sewage from bath houses and domestic chores is disposed indiscriminately. This practice breeds mosquitoes in the communities.

Also, due to limited household latrines, indiscriminate open defecation is a common practice in the district with its consequences on water and sanitation related diseases. However, the situation

has gradually improved with support from Global Communities. The introduction of the community led total sanitation (CLTS) concept in the district has led to a declaration of 23 out of the 67 communities in the district as open defecation free (ODF). It is hoped that the effort will be sustained to ensure total open defecation free in the district by 2029.

8.0: Local Economic Development

8.1: Agriculture

Agriculture is the main stay of the economy employing 75% of the population. Some of the major crops cultivated in the District include: maize, rice, millet, soyabeans, cow pea and groundnuts. With regards to livestock, goats, sheep, cattle poultry and guinea fowls are produced. Subsistence farming, rearing of small ruminants, trading and local poultry keeping are the main occupations of the people as sources of income, though commercial farming can be effective if given the boost.

Traditionally, all lands belong to the landlords, otherwise known as “Tindaamba/Chiefs. For development and investment purposes, land can be sold out, or leased to developers/farmers for free or fees determined by those in charge i.e. Tendaamba/Chief.

There is a vast tract of arable lands suitable for large scale farming and animal production. The presence of valley presents the District with an opportunity for the construction of dams for dry season farming. There are two dams in the district which serve as sources of livelihood for many people during the dry season.

8.2 Food Security

Household food requirement in the district is a challenge among the poor small holder farmers in the District, especially during the lean season. The harvest season is usually characterised with abundance of food, particularly to crop farming households. However, due to low-income levels, farmers usually sell their produce to supplement their household income leaving them with insufficient food for the rest of the year. As a result, it is not uncommon to see food crop farmers buying food during the lean season to feed their households. This trend is a real concern for the district. There is therefore need to intensify efforts to institute irrigation facilities in the district

also diversify agriculture by intensifying poultry, livestock and fish farming, coupled with a vigorous agricultural development. These will increase food production and household incomes so as to improve food security in the District.

8.3 Challenges Facing the Agricultural Sector

- Inadequate means of transport and logistics for staff
- Lack of mechanization services
- Lack of warehouses for storage of produce
- Dry-up of water bodies especially
- Indiscriminate burning of bushes

8.4 Tourism

There are some potential Tourist attractions in the District. They are however not developed to attract patronage by both domestic and foreign tourists. Some of the tourist attraction sites include the crocodile dam at Tampion and the large deposit of special rocks across some parts of the district, the Oware stone at Dingoni and the community the Shrine of Tulebi at Fazhini.

8.5: Summary of key investment opportunities in the District:

- Large track of fertile lands for commercial farming
- Fertile valleys for irrigation schemes
- Suitable lands for cashew and mango plantations
- Suitable for livestock development: poultry, small ruminants etc.
- Huge demand for tractor services and the need for agriculture mechanization centers.
- Suitable for the establishment of groundnut processing factory to enhance the production value chain
- Large sheanut industry and the need for investment along its value chain
- Development and management of potential tourist sites
- The road transport industry presents a good investment opportunity for potential investors in the district. Considering the fact that the district is on a very economic route.
- The Damba festival celebrated by the people of Nanton with rich cultural heritage

9.0: Security in the District

The significance of human security to development is something that cannot be over-emphasized. Human security is multi sectorial and threats to human security come from a broad range of sources including economic, political, environmental, health, food, human/ personal.

9.1: Economic Security

Persistent poverty and un-employment are threats to economic security. The high level of poverty and the increasing rate of un-employment especially among the youth constitute a major security concern in the district. Implementation of Employment generation and poverty reduction policies are therefore very critical in the plan period.

9.2: Political Security

According to (UNDP, 1994) Political security refers to the absence of political repression and human rights abuses. This implies that existence of political repression and human right abuses constitute a threat to political security in the district. Though political insecurity is not much an issue in the district, there is the need to foster the existing political security by encouraging participatory, transparent and accountable governance and providing the needed environment to protect the human rights of the people.

9.3: Environmental Security

Environmental degradation, resource depletion, climate change, natural disasters, droughts, floods, bush burning and pollution are the major sources of environmental insecurity. The persistent cutting down of trees for charcoal and bush burning and the gradual manifestation of climate change in the district calls for concern as long as the environmental security of the district is concerned. There is therefore the need to come out with effective environmental protection strategies to deal with the situation.

9.4: Health Security

Deadly infectious diseases, unsafe food, malnutrition, and lack of access to basic health care are the major sources of health insecurity. Health insecurity is a major development concern in the district. Majority of the inhabitants of the district do not have access to basic health care. Both

health facilities and health professionals are woefully inadequate. There is no District Hospital for referrals.

9.5: Human/ Personal security

Personal security is a component of human security. Physical violence, crime, domestic violence, intra-ethnic, chieftaincy, religious, political disputes and human trafficking are the major sources of threat to personal security in the district. However, the district has no police presence in the district even though a police station has been built. The Nanton Police command operates from the Savelugu district. There is therefore the need for an autonomous District Police Headquarters is eminent to ensure peace and security in the district.

10.0 Poverty, Vulnerability, Inequality and Social Protection

Poverty remains pervasive in the district and it is one of the poorest districts in the Northern region. Vulnerability here refers to the probability of livelihood stress occurring in the Nanton District. Vulnerable people in the district include people living with AIDS, Persons with disabilities, women, the aged, and children. Cultural beliefs, perceptions, practices and disasters are the major causes of vulnerability concerns in the District and the major victims are mainly people with disabilities, women and children. Some cultural practices in the District such as foster parenting have rendered some children very vulnerable, uneducated and economically hopeless. The changing climate in the district has also exacerbated the situation of the poor peasant and small holder farmers with limited alternative livelihood options. Dealing with vulnerability issues therefore requires a multi-faceted approach that will address the varying needs of the potential victims of the circumstance.

Poverty is one of the indicators that exacerbate vulnerability as it exposes people to the shocks of any disastrous condition. According to the recent survey by the Ghana Household Registry, Nanton District is one on the poorest districts in the Northern region.

10.1: People with Disability

Persons with disability as defined in the 2010 Population and Housing Census report are those who are unable to perform specific tasks/activities or are restricted in their performance due to loss of function of some part of the body as a result of impairment or malformation. The development of a nation depends on the important contributions of not only a segment of the population but on the collective contribution of every individual, including Persons with Disabilities (PWDs). To this extent, government and civil society organizations in recent years have made progress in addressing disability issues, resulting in some positive gains in improving the lives of PWDs in the country. For instance, the government has enacted the Rights of Persons with Disability Act, 2016 which provides that the appropriate Government shall ensure that the PWD enjoy the right to equality, life with dignity and respect for his or her integrity equally to others.

According a survey by the Social Welfare department of the Nanton District Assembly, there is a total of 782 persons with disability representing 1 percent of the total population in the district. The male population 364 (1%) and female 410 (1.6%) have one form of disability or the other.

11.0 Gender Analysis

The 2020 population and housing census report indicates that females constitute about 50.2% of the total population. However, there are serious imbalances in the system to the disadvantage of women. Equal opportunities are limited to both men and women due to some socio-cultural beliefs. For instance, women only have access to land but do not control land. This renders them economically insolvent since the local economy of the district is basically agrarian. There is therefore the need to introduce gender specific programs that will empower women economically. To do this, women groups will be identified and assisted through capacity building and provision of credit facilities to enable them set-up small and medium scale businesses to boost their economic status in the society and also take care of their children and various household needs.

On the aspect of decision making, major household decisions are taken by household heads who are predominantly men with little or no involvement of women. Again, in the local governance, women participation has been very low. This situation is clearly demonstrated in the current composition of the General Assembly which has a total membership of 26 with only 2 females

elected Assemblymember. There is therefore the need to consciously put together strategies to increase women representation in the local governance system while continuous sensitization is carried out to improve women participation in household decision making.

12.0: Information and Communication Technology

Communication serves as an important tool in the economic and social lives of people. Business is transacted through communication, and the availability of effective and reliable communication channels can enhance economic activity and improve incomes. Recent developments in communication include the use of mobile phones, desktop or laptop computers and the internet. Information and communication technology in the District is very low. There is only one ICT center in the District capital. Majority of the people in the District therefore have no access to computers much less other applications such as internet. However, with recent proliferation of mobile phones nearly every house has a mobile phone for basic communication. Individuals with mobile phones with improved applications use them both for calls and internet activities. Teaching of ICT, which is part of the curricular of schools, is also faced with problems as the necessary facilities needed for the training are almost non-existent.